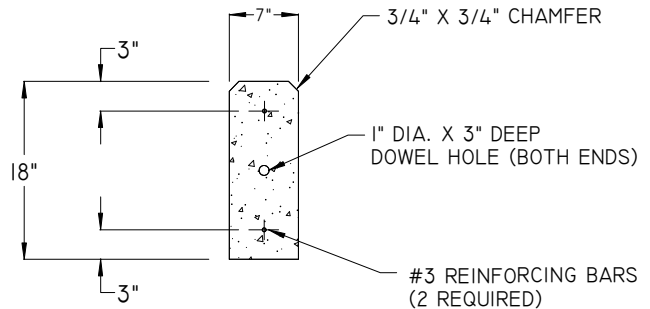
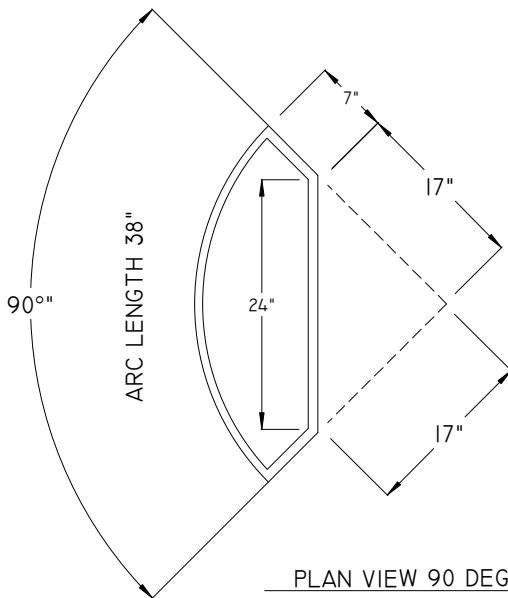


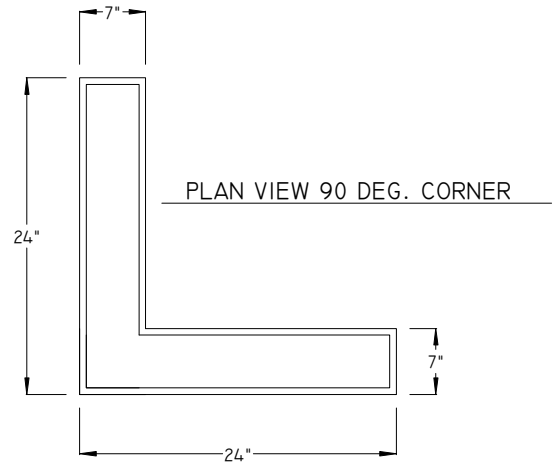
TYPICAL STRAIGHT RADIUS



SECTION VIEW



PLAN VIEW 90 DEG. CORNER



PLAN VIEW 90 DEG. CORNER

DESIGN NOTES

1. CONCRETE - 5000 PSI, 28 DAYS
2. LENGTH OF RADIUS CURB IS ALONG OUTSIDE FACE.
3. RADIUS DIMENSION IS TO THE OUTSIDE FACE OF THE CURB.
4. Q IS THE QUANTITY REQUIRED TO FORM COMPLETE 90 DEG. CURVE.
5. LARGER RADII MUST BE FORMED WITH STRAIGHT SECTIONS.
6. APPROXIMATE WEIGHT - 130 LBS/FT

LENGTH	WIDTH	DEPTH	STYLE	Q
6'-0"	7"	18"	STRAIGHT	---
3'-2"	7"	18"	2' RADIUS	1
4'-8 1/2"	7"	18"	3' RADIUS	1
3'-11 1/8"	7"	18"	5' RADIUS	2
5'-2 3/4"	7"	18"	10' RADIUS	3
5'-10 3/4"	7"	18"	15' RADIUS	4
5'-2 3/4"	7"	18"	20' RADIUS	6
5'-7 5/16"	7"	18"	25' RADIUS	7
5'-10 11/16"	7"	18"	30' RADIUS	8
5'-8 1/2"	7"	18"	40' RADIUS	11
6'-0 1/2"	7"	18"	50' RADIUS	13